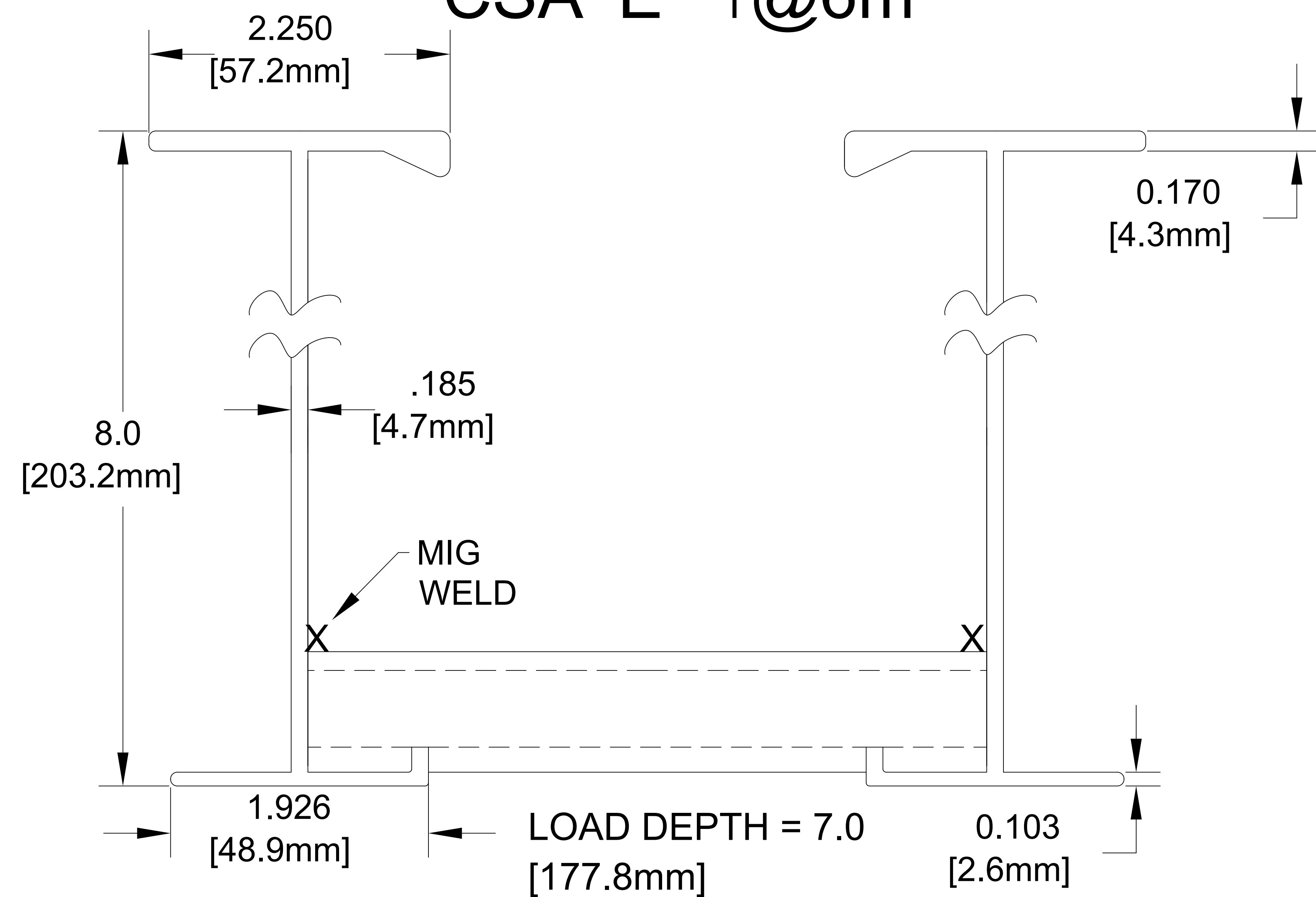


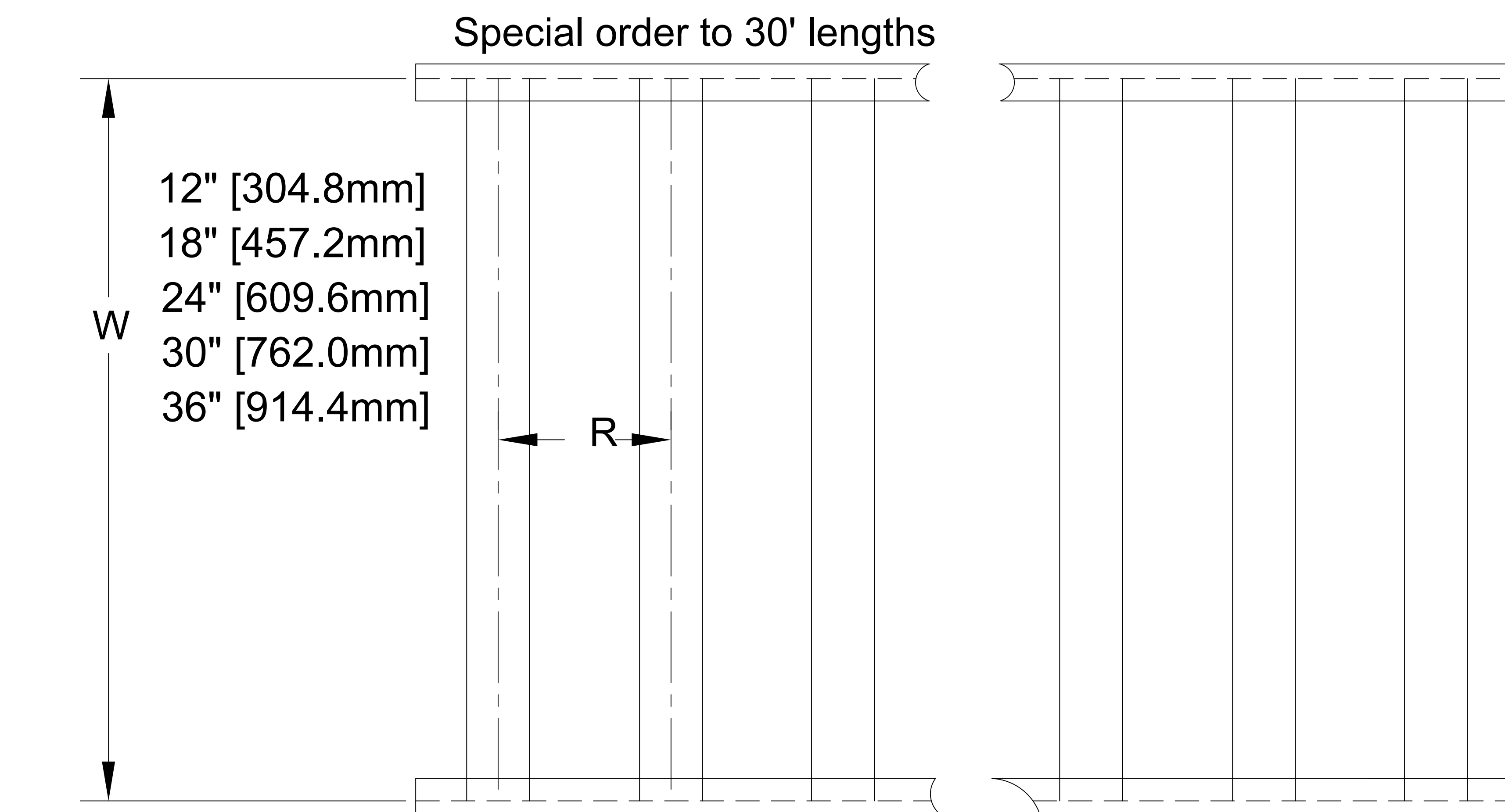
# 875A ALUMINUM CABLE TRAY --NEMA 24C, 30C

## CSA E 1@6m

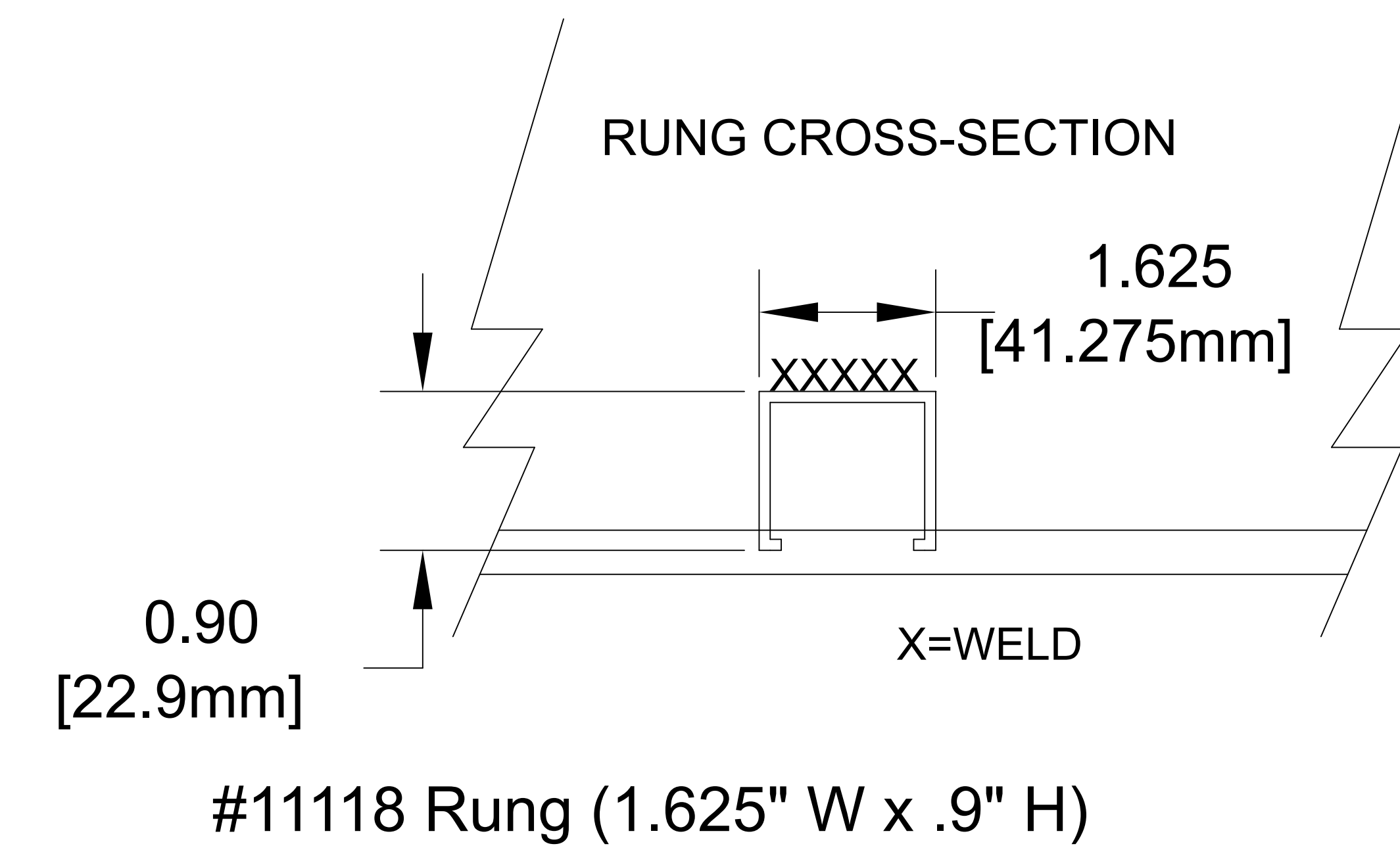


Data (2 Rails)  
 $I_x = 34.36 \text{ in.}^4$      $S_x = 9.6 \text{ in.}^3$      $UL \text{ AREA} = 4.24 \text{ in.}^2$     EGC  
 = 2000 AMPS  
 Allowable Loads - Simple Beam Loads Data - ( Factor of safety - 1.5 )

Span	feet			18	20	22	25	30
	meters	14 4.27	16 4.88	5.49	6.10	6.71	7.62	9.14
Load	lbs/ft	484	370	293	237	195	148	101
	kg/m	720	551	436	353	290	220	150
Deflect.	in.	1.24	1.61	2.04	2.52	3.05	3.77	5.35
	mm.	31.5	40.9	51.8	64.0	77.5	95.8	135.9
**	K-factor	.0026	.0044	.0070	.0106	.0156	.0260	.0530



R=9" [228.6mm] RUNG SPACING  
 R=12" [304.8mm] RUNG SPACING  
 R=18" [457.2mm] RUNG SPACING



Notes: 1. Sheet Metal tolerances    2. Unless noted all dimensions are in inches

**MATERIAL:**  
**ALUM ALLOY**  
**6063-T6**

This drawing and specifications are the property of Chalfant Inc. and shall not be used for the basis of mfg. or sale or quotation of illustrated product without permission.

**Chalfant Cleveland, OH**    Tel. 216-521-7922    Fax 216-521-9922

\*\* K x W may be used to calculate deflection of lighter loads at indicated spans above

Furnished with 10 Hole Splice Plate (pair) and 20, 9TBN302 3/8" Round Head serrated stainless bolt & integral lock washer nut assemblies.

SIZE	FSCM NO.	DWG NO.	REV
<b>A</b>		<b>875A "W"</b>	
SCALE	<b>010-"R"</b> SHEET		