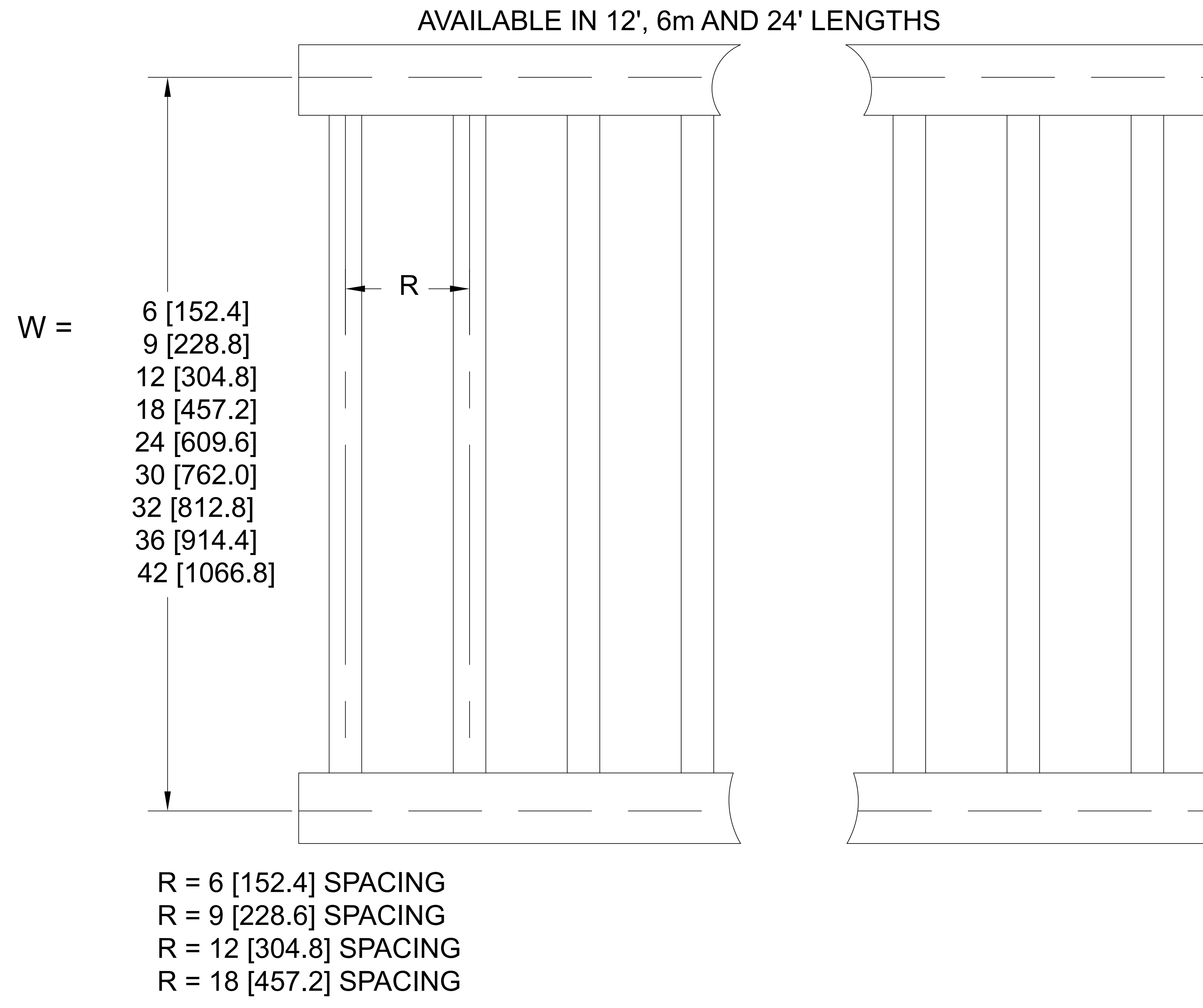
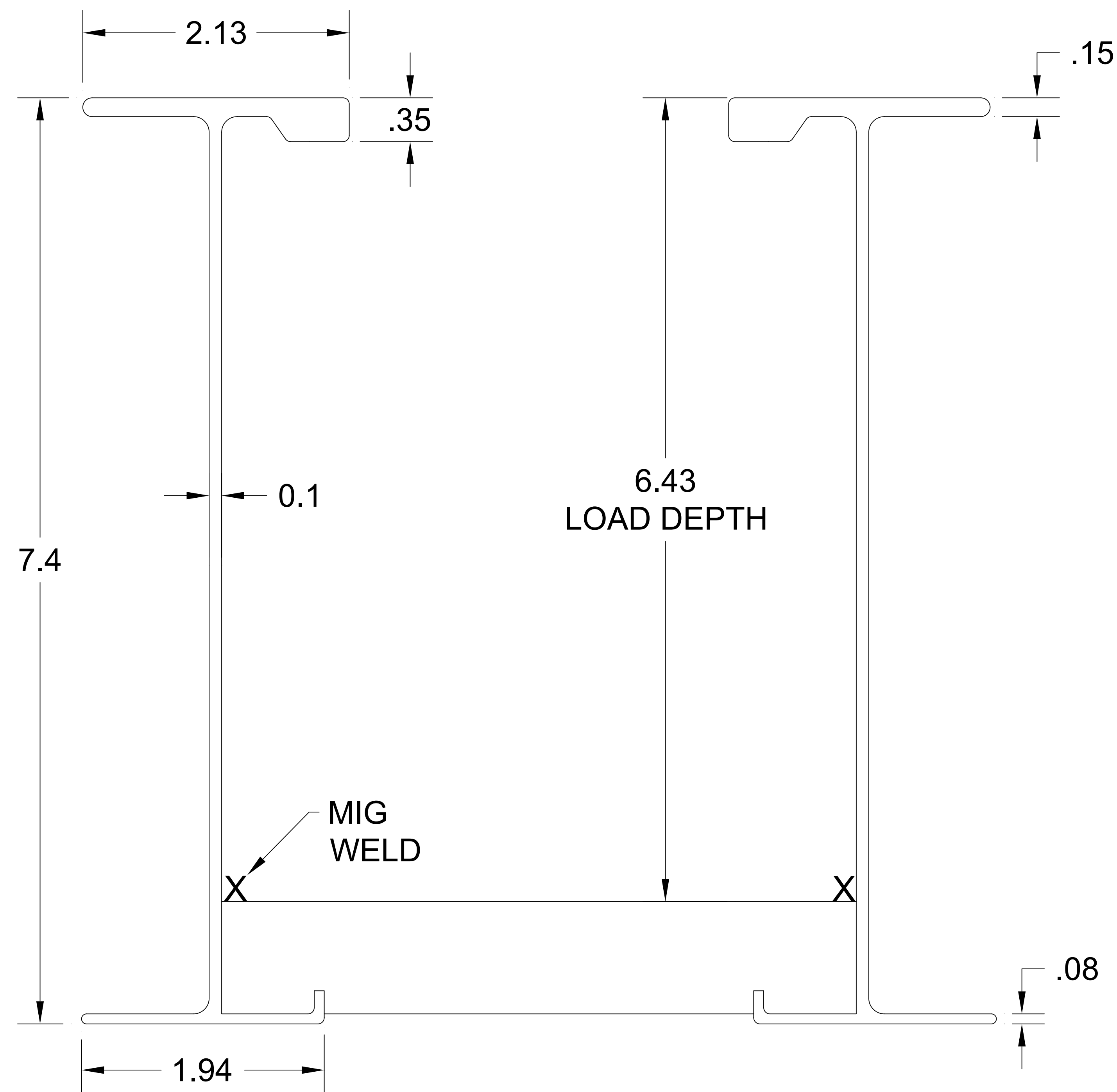


# 57A ALUMINUM CABLE TRAY-- NEMA 24C/30B



**Data (2 Rails)**

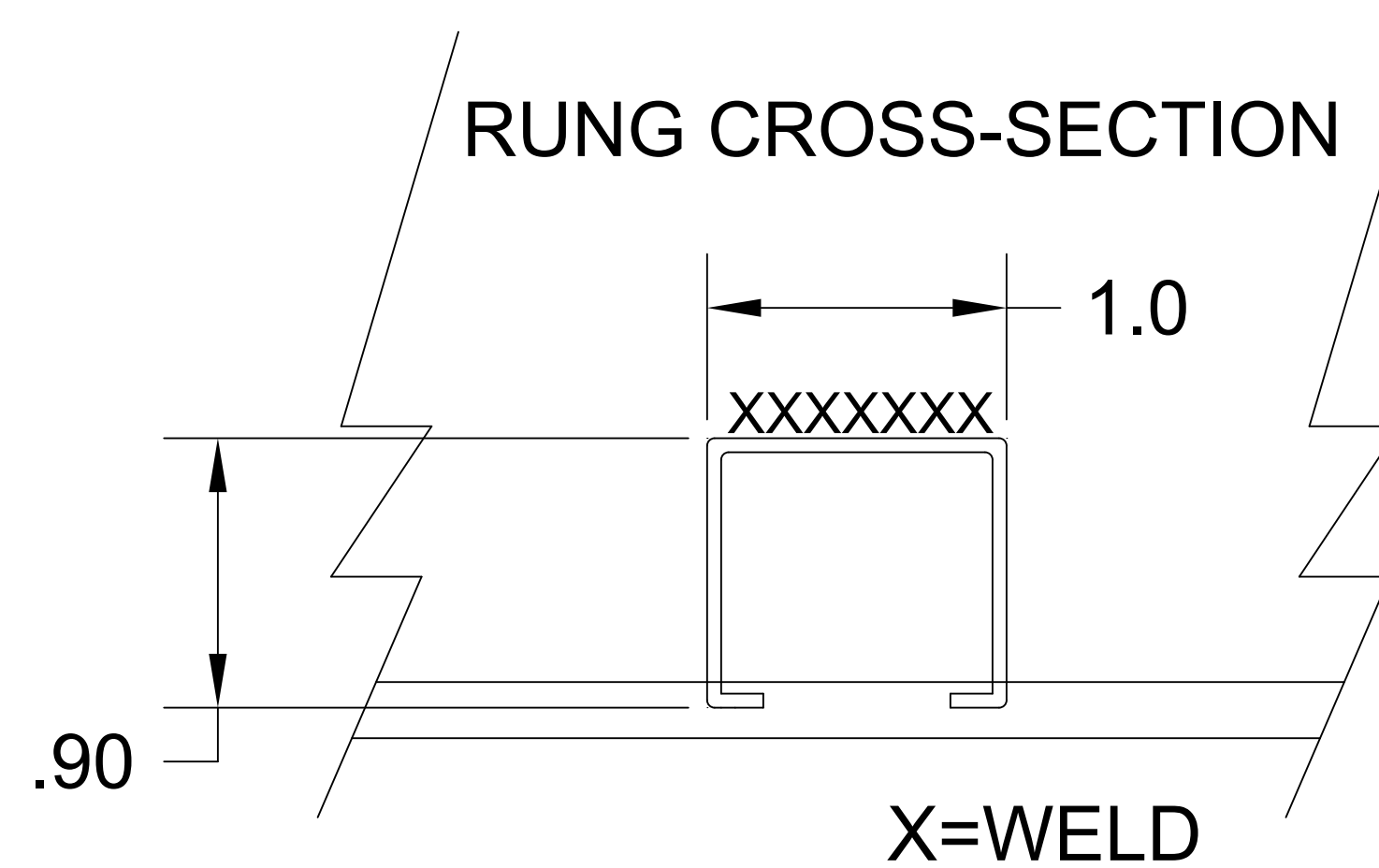
$I_x = 20.40 \text{ in.}^4$     $S_x = 6.70 \text{ in.}^3$     $UL \text{ AREA} = 2.60 \text{ in.}^2$     $EGC = 2000 \text{ AMPS}$

Allowable Loads - Simple Beam Loads Data - ( Factor of safety - 1.5 )

Span	feet	12	14	16	18	20	24	30
	meters	3.66	4.27	4.88	5.49	6.10	7.32	9.14
Load	lbs/ft	425	312	239	188	153	106	75
	kg/m	632	464	356	280	228	158	112
Deflect.	in.	0.98	1.31	1.72	2.19	2.69	3.89	5.7
	mm.	24.9	33.3	43.7	55.6	68.3	98.8	144.7
** K-factor		.0023	.0042	.0072	.0116	.0176	.0366	.076

\*\* K x W may be used to calculate deflection of lighter loads at indicated space above

Furnished with 8 Hole Splice Plate ( pair ) and 16, 9 TBN302 3/8" Round head serrated stainless bolt & integral lock washer nut assemblies.



#11170 Rung (.875" W x .9" H) Used from 6" to 18" width except for 18" W & 18" rung spacing.  
 #11174 Rung (1.0" W x .9" H) Used at 24" to 36" width's.  
 #11118 Rung (1.625" W x .9" H) Used at 12" & 18" rung spacing for 30" & 36" widths. And for 42" W & 48" W all rung spacing

Notes: 1. Sheet Metal tolerances   2. Unless noted all dimensions are in inches

**\* MATERIAL**  
**A= 6063-T6**  
**ALUM ALLOY**

This drawing and specifications are the property of Chalfant Inc. and shall not be used for the basis of mfg. or sale or quotation of illustrated product without permission.

**Chalfant Brunswick, OH**   Tel. 330-273-3510  
 Fax 330-273-8149

SIZE	FSCM NO.	DWG NO.	REV
<b>A</b>		<b>57A "W" 010- "R"</b>	
SCALE	SHEET		