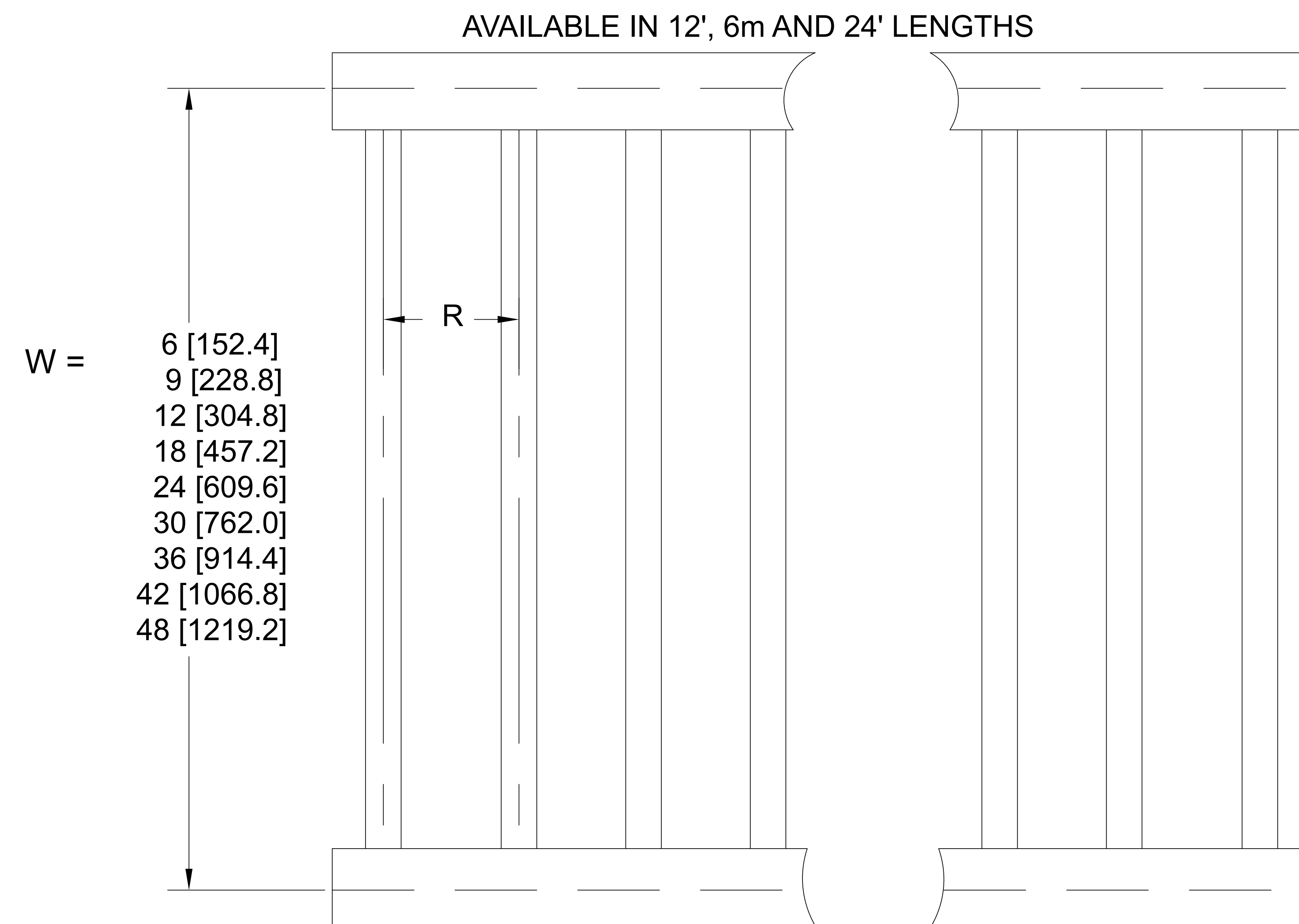
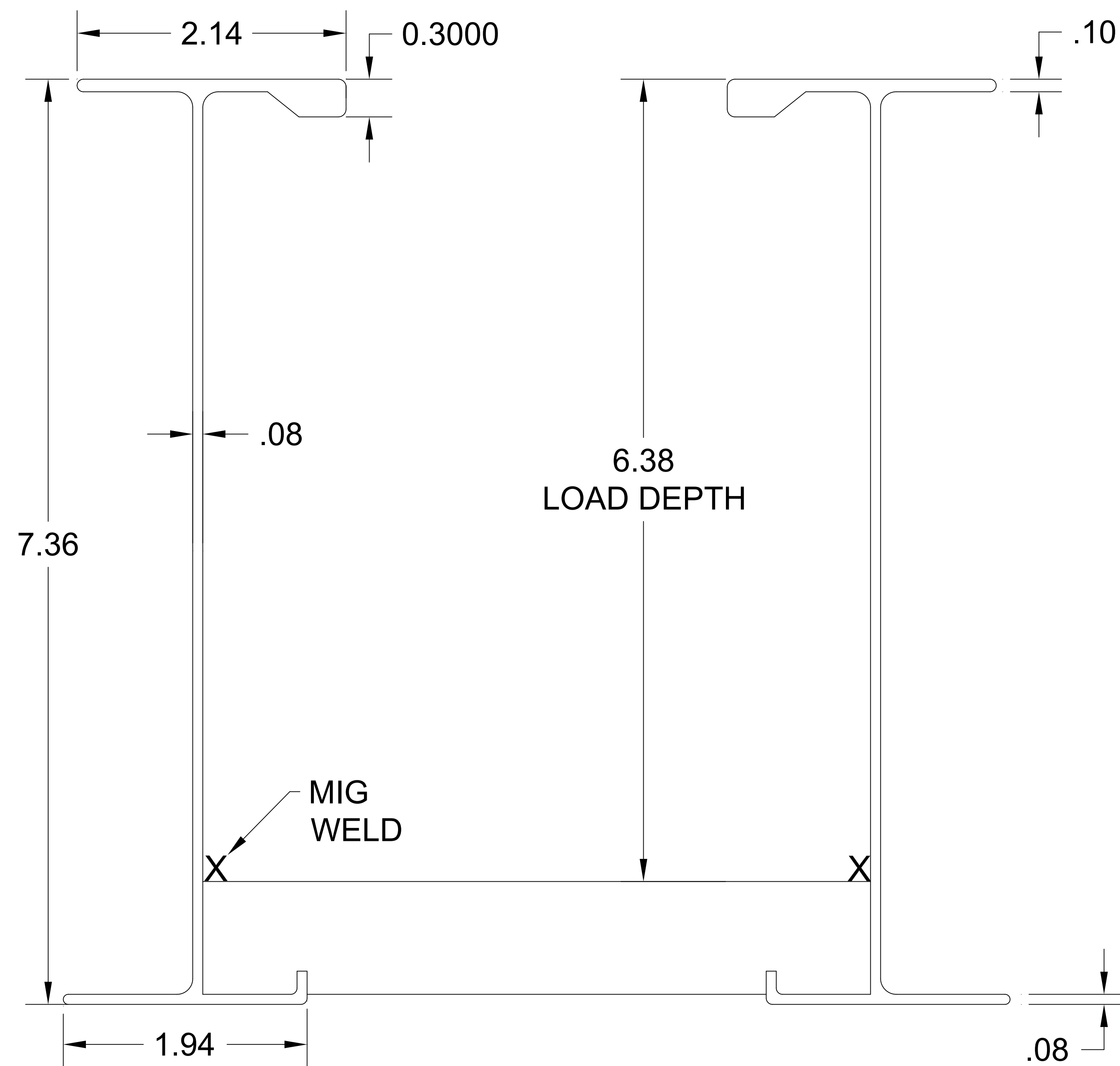
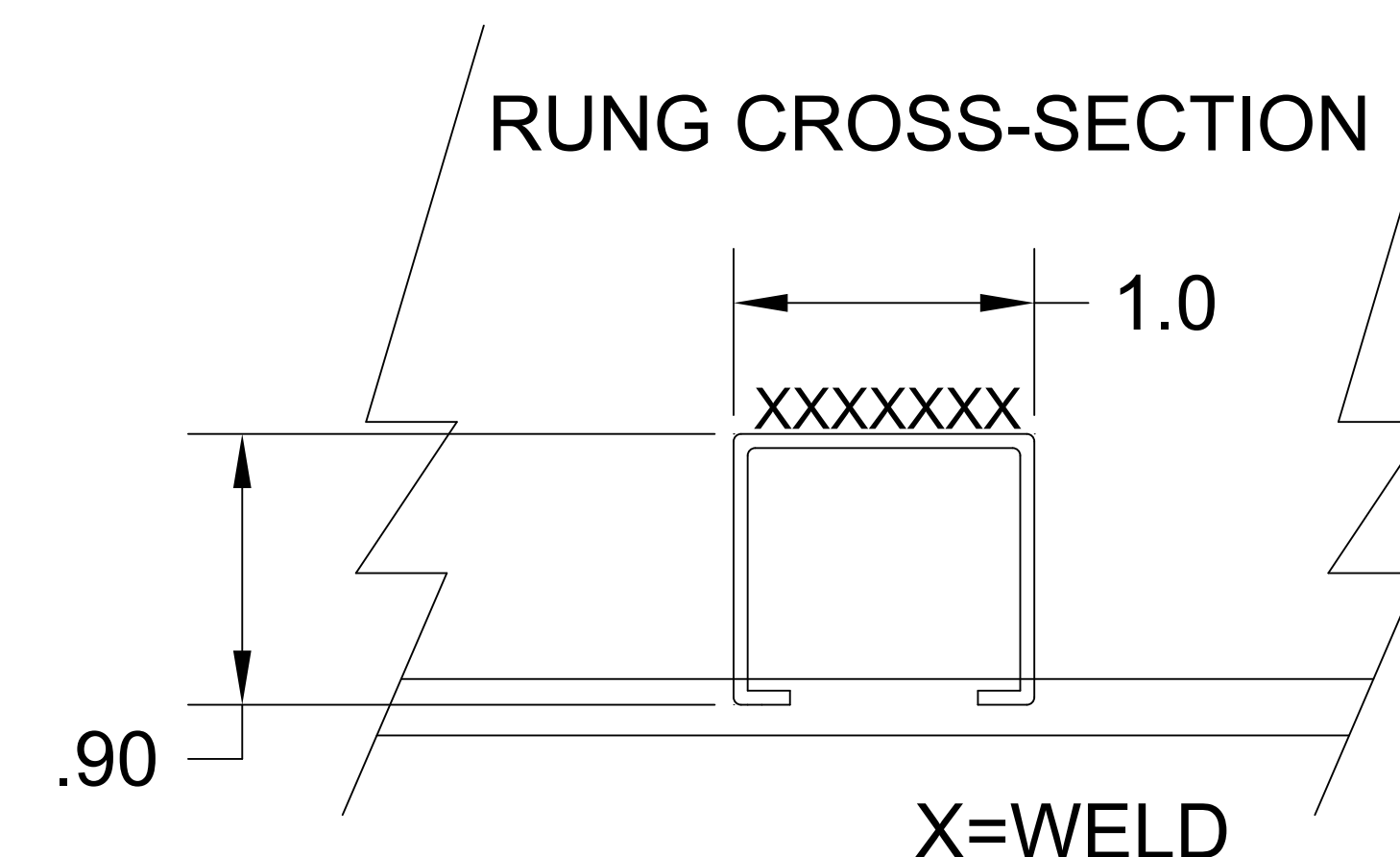


47A ALUMINUM CABLE TRAY-- NEMA 20C



R = 6 [152.4] SPACING
 R = 9 [228.6] SPACING
 R = 12 [304.8] SPACING
 R = 18 [457.2] SPACING



#11170 Rung (.875" W x .9" H) Used from 6" to 18" width except for 18" W & 18" rung spacing.

#11174 Rung (1.0" W x .9" H) Used at 24" to 36" width's.

#11118 Rung (1.625" W x .9" H) Used at 12" & 18" rung spacing for 30" & 36" widths. And for 42" W & 48" W all rung spacing

Data (2 Rails)

$I_x = 17.00 \text{ in.}^4$ $S_x = 5.29 \text{ in.}^3$ $UL \text{ AREA} = 2.12 \text{ in.}^2$ $EGC = 2000 \text{ AMPS}$

Allowable Loads - Simple Beam Loads Data - (Factor of safety - 1.5)

Span	feet	12	14	16	18	20	24
	meters	3.66	4.27	4.88	5.49	6.10	9.14
Load	lbs/ft	288	212	162	128	104	72
	kg/m	428	315	241	190	155	107
Deflect.	in.	0.78	0.66	1.41	1.78	2.20	3.16
	mm.	19.8	16.7	35.8	45.2	55.8	80.3
** K-factor		.0027	.0031	.0087	.0189	.0212	.0439

** K x W may be used to calculate deflection of lighter loads at indicated space above

Furnished with 8 Hole Splice Plate (pair) and 16, 9 TBN302 3/8" Round head serrated stainless bolt & integral lock washer nut assemblies.

Notes: 1. Sheet Metal tolerances 2. Unless noted all dimensions are in inches

* MATERIAL A= 6063-T6 ALUM ALLOY	This drawing and specifications are the property of Chalfant Inc. and shall not be used for the basis of mfg. or sale or quotation of illustrated product without permission.			
	Chalfant Brunswick, OH			Tel. 330-273-3510 Fax 330-273-8149
SIZE A	FSCM NO.	DWG NO. 47A "W" 010- "R"	REV	
SCALE	SHEET			