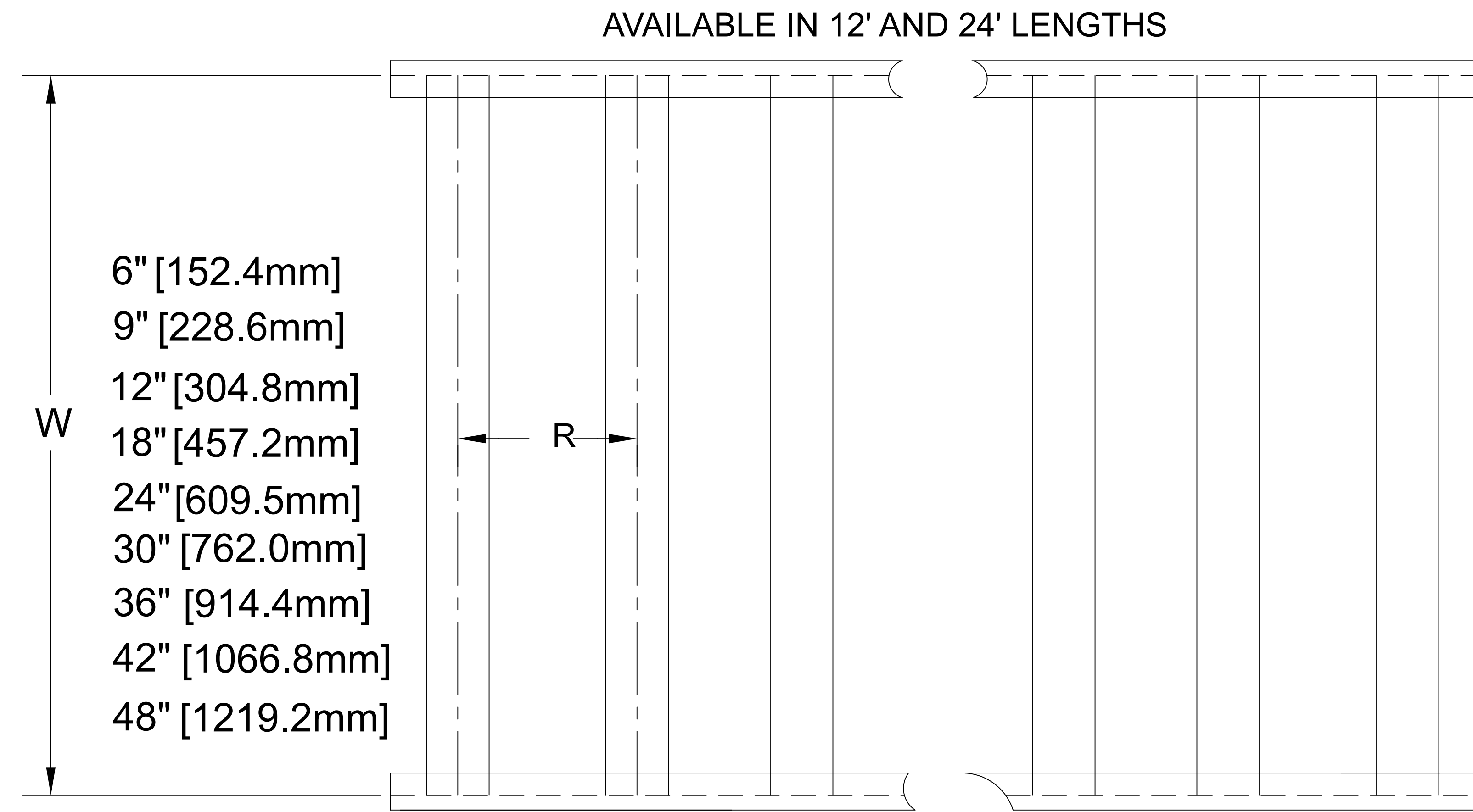
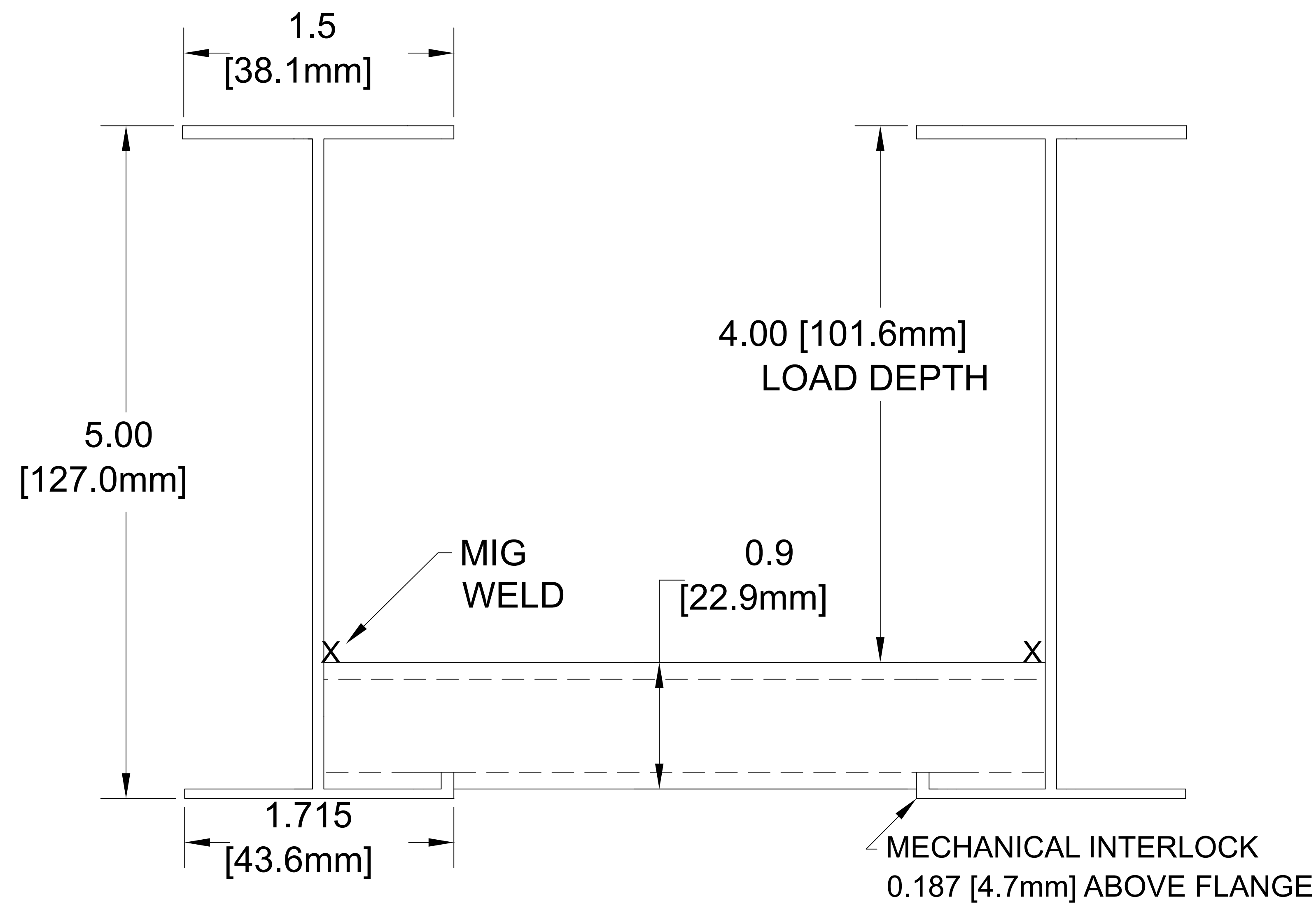


35A ALUMINUM CABLE TRAY --NEMA 16A, 12C



Data (2 Rails)

$I_x = 4.36 \text{ in.}^4$

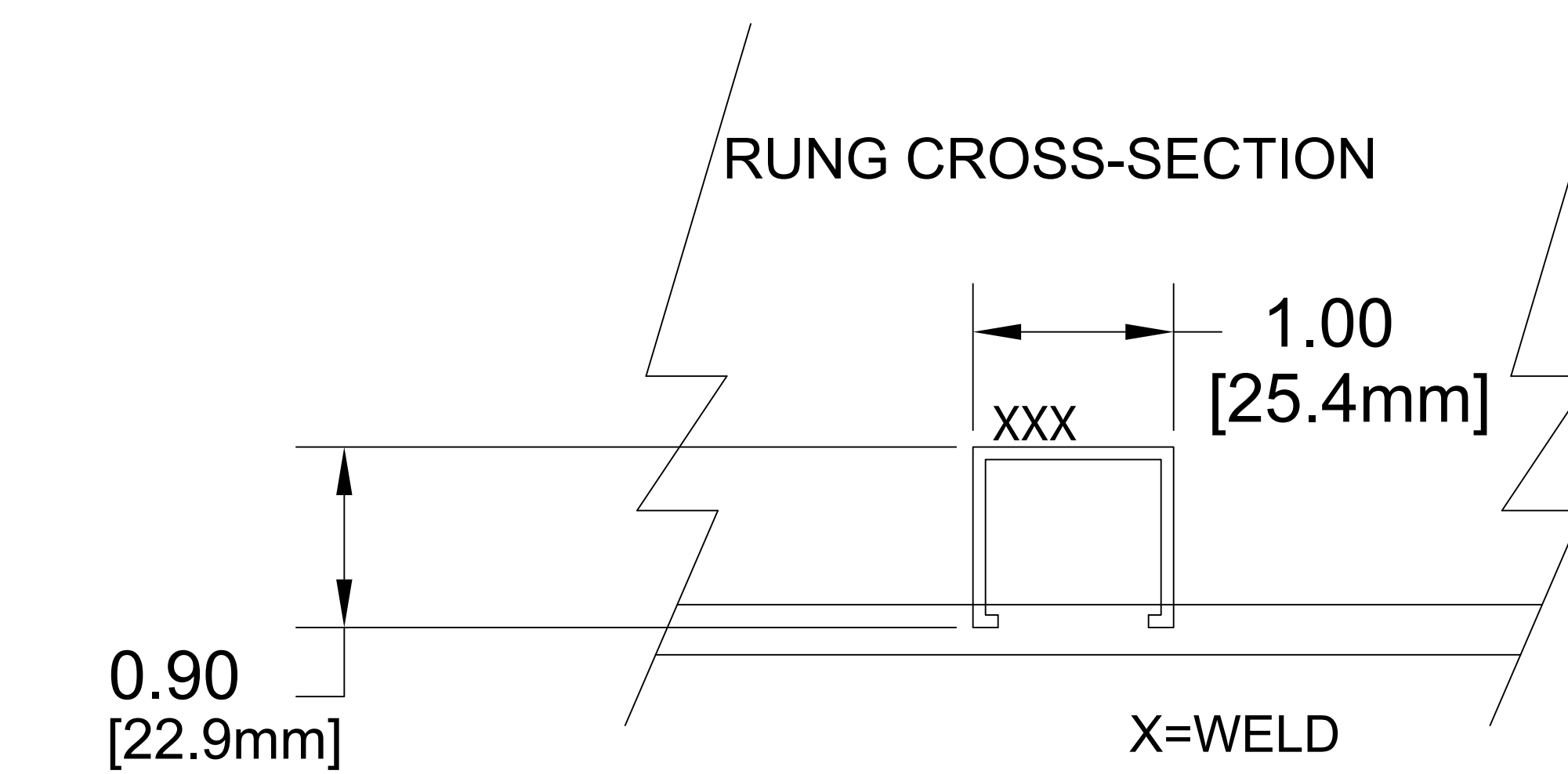
$S_x = 1.63 \text{ in.}^3$ $UL \text{ AREA} = 1.19 \text{ in.}^2$

EGC = 1200 AMPS

Allowable Loads - Simple Beam Loads Data - (Factor of safety - 1.5)

Span	feet	10	12	14	16
	meters	3.05	3.66	4.27	4.88
Load	lbs/ft	161	112	82	60
	kg/m	239.6	166.7	122.0	89.3
Deflect.	in.	.8404	1.212	1.640	2.03
	mm.	21.3	30.8	41.7	51.6
**	K-factor	.0052	.0110	.0200	.0338

- R=6" [152.4mm] RUNG SPACING
- R=9" [228.6mm] RUNG SPACING
- R=12" [304.8mm] RUNG SPACING
- R=18" [457.2mm] RUNG SPACING



#11170 Rung (.875" W X .9" H) Used from 6" to 18"

#11174 Rung (1.0" W x .9" H) used at 24" W thru 36" widths

#11118 Rung (1.625" W x .9" H) used at 12" & 18" RS for 30" thru 48" width's

Notes: 1. Sheet Metal tolerances 2. Unless noted all dimensions are in inches

Material
ALUM ALLOY
6063-T6

This drawing and specifications are the property of Chalfant Inc. and shall not be used for the basis of mfg. or sale or quotation of illustrated product without permission.

Chalfant Brunswick, OH Tel. 330-273-3510 Fax 330-273-8149

Furnished with 4 Hole Splice Plate (pair) and 8, 9 TBN302 3/8" Round head serrated neck stainless bolt & integral lock washer nut assemblies.

SIZE	FSCM NO.	DWG NO.	REV
A		35A "W" 010-"R"	
SCALE	SHEET		