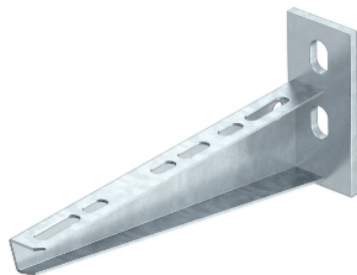


Wall and support bracket AW 15



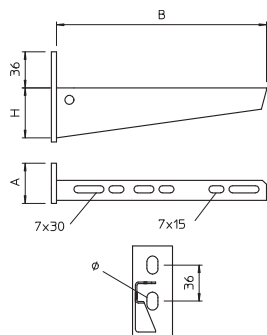
Wall and support bracket with welded head plate and two fastening holes.
The double-perforated bracket offers the special option of double anchoring on light-weight partitions and light masonry.

Type	Width mm	F in kN	Pack. pcs	Weight kg/100 pcs.	Item No.
AW 15 11 FT 2L	110	1,5	30	16,000	6420909
AW 15 16 FT 2L	160	1,5	30	20,000	6420912
AW 15 21 FT 2L	210	1,5	30	29,000	6420915
AW 15 31 FT 2L	310	1,5	30	42,000	6420918
AW 15 41 FT 2L	410	1,5	30	59,300	6420921
AW 15 51 FT 2L	510	1,5	20	72,000	6420924
AW 15 61 FT 2L	610	1,5	18	91,000	6420927

St Steel

FT Hot-dip galvanised

Dimensions



Type	Dimen- sion B mm	Dimen- sion A mm	Dimen- sion H mm	Hole- Ø mm
AW 15 11 FT 2L	110	40	44	11
AW 15 16 FT 2L	160	40	54	11
AW 15 21 FT 2L	210	40	54	11
AW 15 31 FT 2L	310	40	64	11
AW 15 41 FT 2L	410	40	64	11
AW 15 51 FT 2L	510	40	72	11
AW 15 61 FT 2L	610	40	77	11