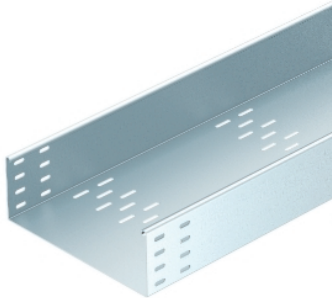


Cable tray BKRS, side height 110



Heavy-duty, walkable cable tray system BKRS with base perforation, in 110 mm side height.

The cable tray has connector perforations on both sides.

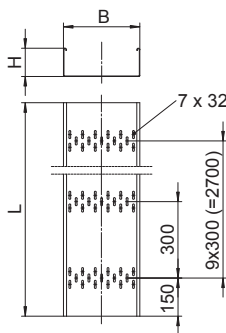
Straight connectors should be ordered separately and in the appropriate quantity.

Type	Width mm	Plate thickness mm	Pack. m	Weight kg/100 m	Item No.
BKRS 1110 FS	100	2	3	523,670	6061981
BKRS 1120 FS	200	2	3	672,670	6061983
BKRS 1130 FS	300	2	3	822,000	6061985
BKRS 1140 FS	400	2	3	971,670	6061987
BKRS 1150 FS	500	2	3	1121,000	6061989
BKRS 1160 FS	600	2	3	1270,340	6061991

St Steel

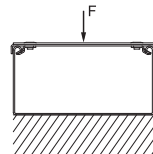
FS Strip-galvanised

Dimensions



Type	Dimension L mm	Dimension B mm	Side height mm	Plate thickness mm	Useful cross-section cm ²
BKRS 1110 FS	3000	100	110	2	96
BKRS 1120 FS	3000	200	110	2	196
BKRS 1130 FS	3000	300	110	2	296
BKRS 1140 FS	3000	400	110	2	396
BKRS 1150 FS	3000	500	110	2	496
BKRS 1160 FS	3000	600	110	2	596

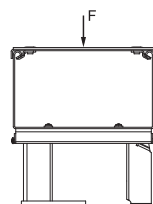
Installation



Floor mounting

Type	Support spacing in m	Cover with panel thickness 4 mm Approved load in N	Cover with panel thickness 6 mm Approved load in N
BKRS 1110	-	7000	9000
BKRS 1120	-	7000	9000
BKRS 1130	-	6000 *	7000 *
BKRS 1140	-	6000 *	7000 *
BKRS 1150	-	6000 *	7000 *
BKRS 1160	-	6000 *	7000 *

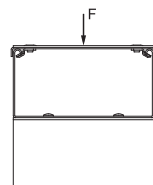
Testing based on DIN EN 50085-2-2



Installation on support bracket

Type	Support spacing in m	Cover with panel thickness 4 mm Approved load in kN/m	Cover with panel thickness 6 mm Approved load in kN/m
BKRS 1110	1,2	4,9	4,9
BKRS 1120	1,2	4,6	4,6
BKRS 1130	1,2	4,2 *	4,2 *
BKRS 1140	1,2	3,2 *	3,2 *
BKRS 1150	1,2	2,9 *	2,9 *
BKRS 1160	1,2	2,5 *	2,5 *

Supplementary bracket, type STE BKS FS, from 400 mm width



Installation on Z profile

Type	Support spacing in m	Cover with panel thickness 4 mm Approved load in kN/m	Cover with panel thickness 6 mm Approved load in kN/m
BKRS 1110	1,2	4,9	4,9
BKRS 1120	1,2	4,6	4,6
BKRS 1130	1,2	4,2 *	4,2 *
BKRS 1140	1,2	3,2 *	3,2 *
BKRS 1150	1,2	2,9 *	2,9 *
BKRS 1160	1,2	2,5 *	2,5 *

*In order to archive the maximum permitted load, Z-shaped barrier strips must be placed in cable trays B > 200 mm. The distance of the barrier strip to the side rail respectively to the next barrier strip must not exceed 220 mm.