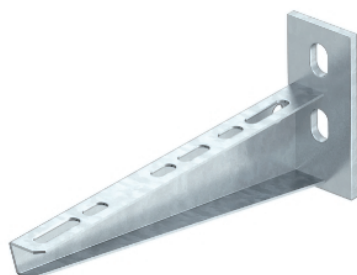


Wall and support bracket AW 15



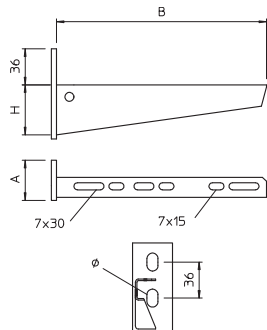
Wall and support bracket with welded head plate and two fastening holes.
The double-perforated bracket offers the special option of double anchoring on light-weight partitions and light masonry.

Type	Width mm	F in kN	Pack. pcs	Weight kg/100 pcs.	Item No.
WM04322	110	1,5	30	16,000	6420909
WM06322	160	1,5	30	20,000	6420912
WM08322	210	1,5	30	29,000	6420915
WM12322	310	1,5	30	42,000	6420918
WM16322	410	1,5	30	59,300	6420921
WM20322	510	1,5	20	72,000	6420924
WM24322	610	1,5	18	91,000	6420927

St Steel

FT Hot-dip galvanised

Dimensions



Type	Dimen- sion B mm	Dimen- sion A mm	Dimen- sion H mm	Hole- Ø mm
WM04322	110	40	44	11
WM06322	160	40	54	11
WM08322	210	40	54	11
WM12322	310	40	64	11
WM16322	410	40	64	11
WM20322	510	40	72	11
WM24322	610	40	77	11