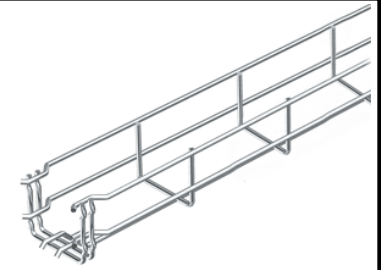


**PRODUCT SPECIFICATIONS:**

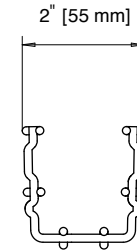
1. STANDARD LENGTH 10' [3 m] GRID PATTERN  
2" [50 mm] x 2" [55 mm]
2. TEMPERATURE CLASS: -45°C (-49° F) TO 150°C (302° F)
3. ALL EXPOSED FABRICATED EDGES ARE TAPERED AT 20°

TABLE 1

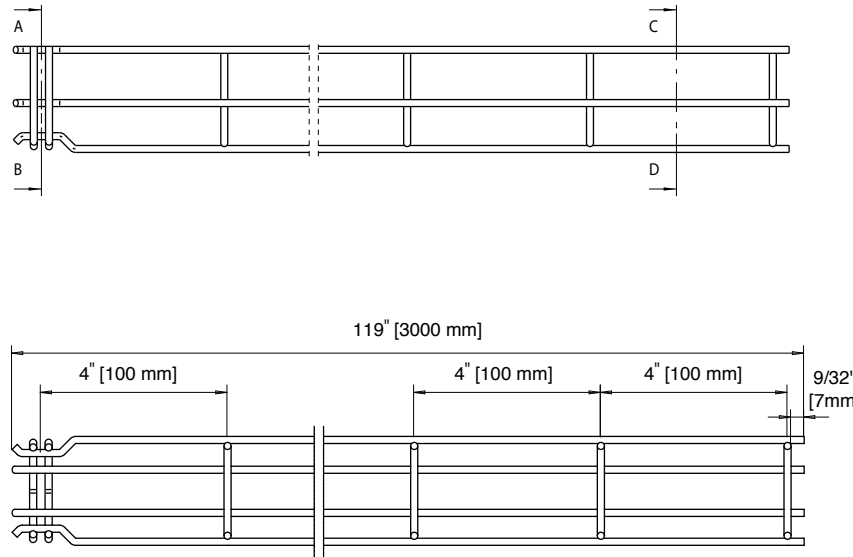
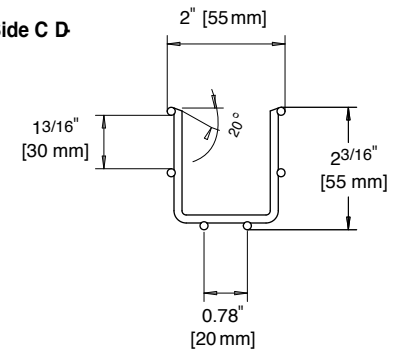
Part Number	Finish	Weight	
		Lbs/Ft	Kg/m
WMGR202S	Electro-Galvanized	0.45	0.67
WMGR202G	Hot-Dipped Galvanized	0.47	0.70
WMGR202T	Stainless Steel (304)	0.45	0.67
WMGR202Z	Stainless Steel (316)	0.45	0.67



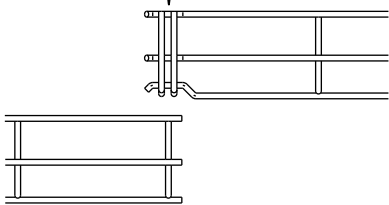
Side A-B



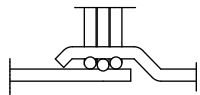
Side C D



PUSH DOWN  
SIDE A-B



INTERLOCKING OF TRAYS



THIS DOCUMENT CONTAINS PROPRIETARY INFORMATION AND IS THE PROPERTY OF CHALFANT MANUFACTURING COMPANY. THE CONTENTS OF THIS DOCUMENT SHALL NOT BE DISCLOSED, COPIED AND OR PUBLISHED WITHOUT THE WRITTEN CONSENT OF CHALFANT MANUFACTURING COMPANY. ©

FILENAME:

CDWMGR202S

SCALE: AS NOTED

DRAWN: J.A.B 01/17/11

APPROVED: - C.D.: 0053

REV. - -

**CHALFANT**

50 Pearl Rd,  
Brunswick, OH. 44212  
Phone: (800) 365-0228 Fax: (330) 273-8149  
www.chalfantcabletray.com

PART NO. : **AS IN TABLE**

SHEET 1 OF 1

**2" x 2"  
WIRE MESH CABLE TRAY**

DRAWING NO. : WMGR202S